

## 35-1064: Polyclonal Antibody to BCL-XL(Phospho-Ser62)

<b>Clonality :</b>	Polyclonal
<b>Application :</b>	WB,IHC,IF
<b>Reactivity :</b>	Human,Mouse,Rat
<b>Gene :</b>	BAD
<b>Gene ID :</b>	572
<b>Uniprot ID :</b>	Q92934
<b>Format :</b>	Purified
<b>Alternative Name :</b>	BAD, BBC6, BCL2L8
<b>Isotype :</b>	Rabbit IgG

### Product Info

<b>Amount :</b>	50 $\mu$ l / 100 $\mu$ l
<b>Content :</b>	1.0 mg/ml,100 $\mu$ l
<b>Storage condition :</b>	Store the antibody at 4°C, stable for 6 months. For long-term storage, store at -20°C. Avoid repeated freeze and thaw cycles.

### Application Note

Western blotting: 1:500, Immunohistochemistry: 1:50~1:100, Immunofluorescence: 1:100~1:200

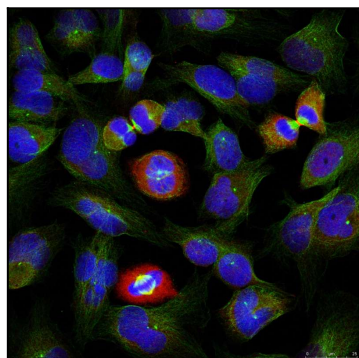


Figure 1: Immunofluorescence staining of methanol-fixed HeLa cells using BCL-XL (phospho-Ser62) antibody (35-1064, Red).

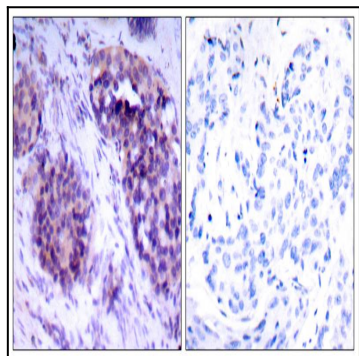


Figure 2: Immunohistochemical analysis of paraffin-embedded human breast carcinoma tissue using BCL-XL (phospho-Ser62) antibody (35-1064).

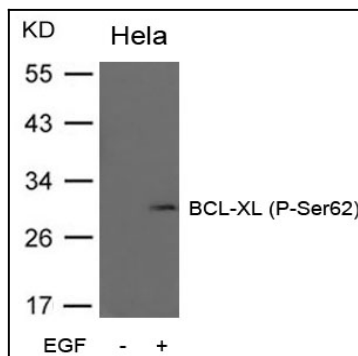


Figure 3: Western blot analysis of extracts from HeLa cells untreated or treated with EGF using BCL-XL (Phospho-Ser62) Antibody 35-1064 .

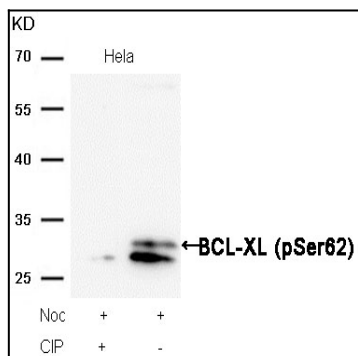


Figure 4: Western blot analysis of extracts from HeLa cells, treated with Noc or calf intestinal phosphatase (CIP), using BCL-XL (Phospho-Ser62) Antibody 35-1064 .