

35-1061: Polyclonal Antibody to Ezrin (Phospho-Tyr353)

Clonality :	Polyclonal
Application :	WB,IHC
Reactivity :	Human
Gene :	EZR
Gene ID :	7430
Uniprot ID :	P15311
Format :	Purified
Alternative Name :	Cytovillin, EZRI, VIL2, Villin 2, p81
Isotype :	Rabbit IgG
Immunogen Information :	Peptide sequence around phosphorylation site of tyrosine 353 (Q-D-Y(p)-E-E) derived from Human EZRIN.

Description

Probably involved in connections of major cytoskeletal structures to the plasma membrane. In epithelial cells, required for the formation of microvilli and membrane ruffles on the apical pole. Along with PLEKHG6, required for normal macropinocytosis. Zhao H, et al. (2004) Proc Natl Acad Sci U S A 101 (25): 9485-9490. Wang Q, et al. (2003) J Biol Chem 278(48): 47731-47743. Gautreau A, et al. (1999) Proc Natl Acad Sci U S A 96(13): 7300-7305. Crepaldi T, et al. (1997) J Cell Biol 138(2): 423-34.

Product Info

Amount :	50 µl / 100 µl
Content :	Supplied at 1.0mg/mL in phosphate buffered saline (without Mg ²⁺ and Ca ²⁺), pH 7.4, 150mM NaCl, 0.02% sodium azide and 50% glycerol.
Storage condition :	Store the antibody at 4°C, stable for 6 months. For long-term storage, store at -20°C. Avoid repeated freeze and thaw cycles.

Application Note

Predicted MW: 81kd, Western blotting: 1:500~1:1000, Immunohistochemistry: 1:50~1:100

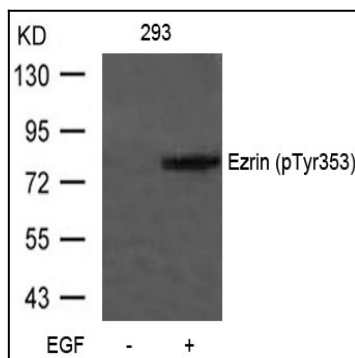


Figure 1: Western blot analysis of extracts from 293 cells untreated or treated with EGF using Ezrin(Phospho-Tyr353) Antibody 35-1061 .

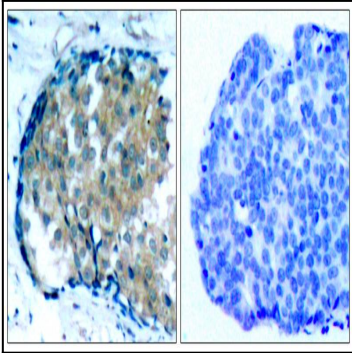


Figure 2: Immunohistochemical analysis of paraffin-embedded human breast carcinoma tissue using Ezrin(Phospho-Tyr353) Antibody 35-1061 (left) or the same antibody preincubated with blocking peptide(right).