

35-1052: Polyclonal Antibody to ATF4 (Phospho-Ser245)

Clonality :	Polyclonal
Application :	IHC,WB
Reactivity :	Human
Gene :	ATF4
Gene ID :	468
Uniprot ID :	P18848
Format :	Purified
Alternative Name :	C/ATF, C/EBP-related ATF, CREB2
Isotype :	Rabbit IgG
Immunogen Information :	Peptide sequence around phosphorylation site of serine 245 (N-R-S(p)-L-P) derived from Human ATF4.

Description

ATF4 encodes a transcription factor that was originally identified as a widely expressed mammalian DNA binding protein that could bind a tax-responsive enhancer element in the LTR of HTLV-1. The encoded protein was also isolated and characterized as the cAMP-response element binding protein 2 (CREB-2). The protein encoded by this gene belongs to a family of DNA-binding proteins that includes the AP-1 family of transcription factors, cAMP-response element binding proteins (CREBs) and CREB-like proteins. These transcription factors share a leucine zipper region that is involved in protein-protein interactions, located C-terminal to a stretch of basic amino acids that functions as a DNA binding domain. Two alternative transcripts encoding the same protein have been described. Two pseudogenes are located on the X chromosome at q28 in a region containing a large inverted duplication.

Product Info

Amount :	50 μ l / 100 μ l
Content :	Supplied at 1.0mg/mL in phosphate buffered saline (without Mg ²⁺ and Ca ²⁺), pH 7.4, 150mM NaCl, 0.02% sodium azide and 50% glycerol.
Storage condition :	Store the antibody at 4°C, stable for 6 months. For long-term storage, store at -20°C. Avoid repeated freeze and thaw cycles.

Application Note

Predicted MW: 45kd, Western blotting: 1:500~1:1000, Immunohistochemistry: 1:50~1:100

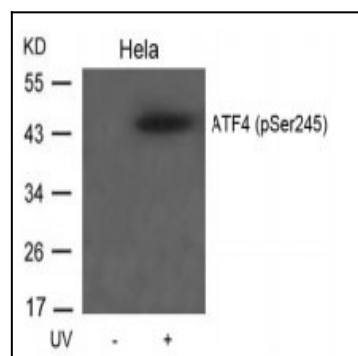


Figure 1: Western blot analysis of extracts from HeLa cells untreated or treated with UV using ATF4(Phospho-Ser245) Antibody 35-1052 .

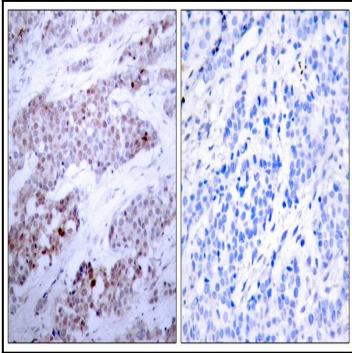


Figure 2: Immunohistochemical analysis of paraffin-embedded human breast carcinoma tissue using ATF4(Phospho-Ser245) Antibody 35-1052 (left) or the same antibody preincubated with blocking peptide(right).