

35-1045: Polyclonal Antibody to STAT3 (Phospho-Ser727)

Clonality :	Polyclonal
Application :	WB,IHC,IF
Reactivity :	Human,Mouse,Rat
Gene :	STAT3
Gene ID :	6774
Uniprot ID :	P40763
Format :	Purified
Alternative Name :	APRF,HIES
Isotype :	Rabbit IgG
Immunogen Information :	Peptide sequence around phosphorylation site of serine 727 (P-M-S(p)-P-R) derived from Human STAT3.

Description

Transcription factor that binds to the interleukin-6 (IL-6)-responsive elements identified in the promoters of various acute-phase protein genes. Activated by IL31 through IL31RA. Heim M H, (1999) J Recept Signal Transduct Res. 19: 75-120. Takeda K, et al. (1997) Proc Natl Acad Sci USA. 94: 3801-3804. Catlett-Falcone R, et al. (1999) Immunity. 10: 105-115. Garcia R, et al. (1998) J Biomed Sci. 5: 79-85. Bromberg J F, et al. (1999) Cell. 98: 295-303.

Product Info

Amount :	50 µl / 100 µl
Content :	Supplied at 1.0mg/mL in phosphate buffered saline (without Mg ²⁺ and Ca ²⁺), pH 7.4, 150mM NaCl, 0.02% sodium azide and 50% glycerol.
Storage condition :	Store the antibody at 4°C, stable for 6 months. For long-term storage, store at -20°C. Avoid repeated freeze and thaw cycles.

Application Note

Predicted MW: 88kd, Western blotting: 1:500~1:1000, Immunohistochemistry: 1:50~1:100, Immunofluorescence: 1:100~1:200

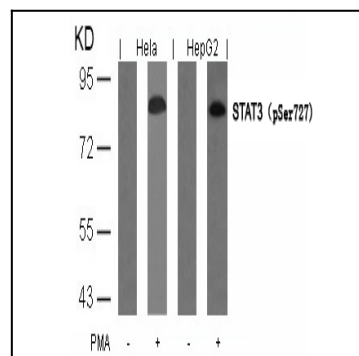


Figure 1: Western blot analysis of extracts from HeLa and HepG2 cells untreated or treated with PMA using STAT3(Phospho-Ser727) Antibody 35-1045 .

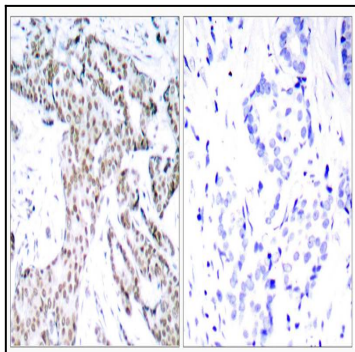


Figure 2: Immunohistochemical analysis of paraffin-embedded human breast carcinoma tissue using STAT3(Phospho-Ser727) Antibody 35-1045 (left) or the same antibody preincubated with blocking peptide(right).

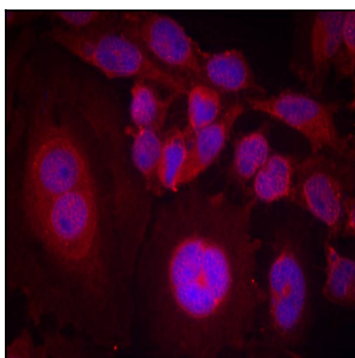


Figure 3: Immunofluorescence staining of methanol-fixed HeLa cells using STAT3(Phospho-Ser727) Antibody 35-1045 .

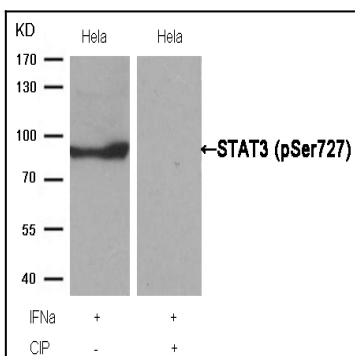


Figure 4: Western blot analysis of extracts from HeLa cells, treated with IFN α or calf intestinal phosphatase (CIP), using STAT3 (Phospho-Ser727) Antibody 35-1045 .