

35-1041: Polyclonal Antibody to GATA1 (Phospho-Ser310)

Clonality :	Polyclonal
Application :	WB,IF
Reactivity :	Human,Mouse,Rat
Gene :	GATA1
Gene ID :	2623
Uniprot ID :	P15976
Format :	Purified
Alternative Name :	GAT1, GATA1, GF-1, NF-E1
Isotype :	Rabbit IgG
Immunogen Information :	Peptide sequence around phosphorylation site of serine 310 (K-A-S(p)-G-K) derived from Human GATA1.

Description

GATA1 encodes a protein which belongs to the GATA family of transcription factors. The protein plays an important role in erythroid development by regulating the switch of fetal hemoglobin to adult hemoglobin. Mutations in this gene have been associated with X-linked dyserythropoietic anemia and thrombocytopenia.

Product Info

Amount :	50 μ l / 100 μ l
Content :	Supplied at 1.0mg/mL in phosphate buffered saline (without Mg ²⁺ and Ca ²⁺), pH 7.4, 150mM NaCl, 0.02% sodium azide and 50% glycerol.
Storage condition :	Store the antibody at 4°C, stable for 6 months. For long-term storage, store at -20°C. Avoid repeated freeze and thaw cycles.

Application Note

Predicted MW: 43kd, Western blotting: 1:500~1:1000, Immunofluorescence: 1:100~1:200

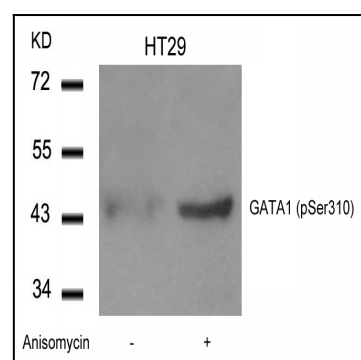


Figure 1: Western blot analysis of extracts from HT29 cells untreated or treated with Anisomycin using GATA1(Phospho-Ser310) Antibody 35-1041 .

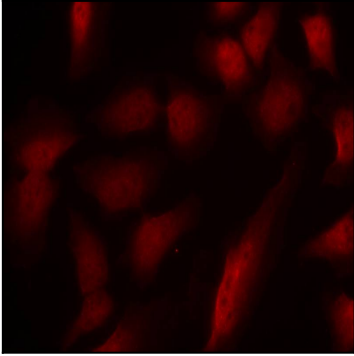


Figure 2: Immunofluorescence staining of methanol-fixed HeLa cells using GATA1(Phospho-Ser310) Antibody 35-1041 .