

35-1019: Polyclonal Antibody to Rel (Phospho-Ser503)

Clonality :	Polyclonal
Application :	IF
Reactivity :	Human
Gene :	REL
Gene ID :	5966
Uniprot ID :	Q04864
Format :	Purified
Alternative Name :	C-Rel
Isotype :	Rabbit IgG
Immunogen Information :	Peptide sequence around phosphorylation site of serine 503 (T-S-S(p)-D-S) derived from Human Rel.

Description

The REL gene encodes c-Rel, a transcription factor that is a member of the Rel/NF κ B family, which also includes RELA (MIM 164014), RELB (604758), NF κ B1 (MIM 164011), and NF κ B2 (MIM 164012). These proteins are related through a highly conserved N-terminal region termed the 'Rel domain,' which is responsible for DNA binding, dimerization, nuclear localization, and binding to the NF κ B inhibitor (MIM 164008).

Product Info

Amount :	50 μ l / 100 μ l
Content :	Supplied at 1.0mg/mL in phosphate buffered saline (without Mg ²⁺ and Ca ²⁺), pH 7.4, 150mM NaCl, 0.02% sodium azide and 50% glycerol.
Storage condition :	Store the antibody at 4°C, stable for 6 months. For long-term storage, store at -20°C. Avoid repeated freeze and thaw cycles.

Application Note

Predicted MW: 78kd, Immunofluorescence: 1:100~1:200

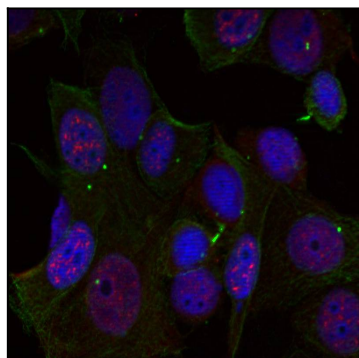


Figure 1: Immunofluorescence staining of methanol-fixed HeLa cells using Rel(Phospho-Ser503) Antibody 35-1019 .