

35-1017: Polyclonal Antibody to NFkB-p105/p50(Phospho-Ser893)

Clonality :	Polyclonal
Application :	IHC,IF
Reactivity :	Rat,Mouse,Human
Gene :	NF-kB1
Gene ID :	4790
Uniprot ID :	P19838
Format :	Purified
Alternative Name :	KBF1, NF-kB1, NFkappaB
Isotype :	Rabbit IgG
Immunogen Information :	Peptide sequence around aa.891~895 (A-S-S-P-V) derived from Human NFkB-p105.

Description

NF-kappa-B is a pleiotropic transcription factor which is present in almost all cell types and is involved in many biological processes such as inflammation, immunity, differentiation, cell growth, tumorigenesis and apoptosis. NF-kappa-B is a homo- or heterodimeric complex formed by the Rel-like domain-containing proteins RELA/p65, RELB, NFKB1/p105, NFKB1/p50, REL and NFKB2/p52. The dimers bind at kappa-B sites in the DNA of their target genes and the individual dimers have distinct preferences for different kappa-B sites that they can bind with distinguishable affinity and specificity. Different dimer combinations act as transcriptional activators or repressors, respectively.

Product Info

Amount :	50 µl / 100 µl
Content :	Supplied at 1.0mg/mL in phosphate buffered saline (without Mg ²⁺ and Ca ²⁺), pH 7.4, 150mM NaCl, 0.02% sodium azide and 50% glycerol.
Storage condition :	Store the antibody at 4°C, stable for 6 months. For long-term storage, store at -20°C. Avoid repeated freeze and thaw cycles.

Application Note

Immunohistochemistry 1:50~1:100

Immunofluorescence 1:100~1:200

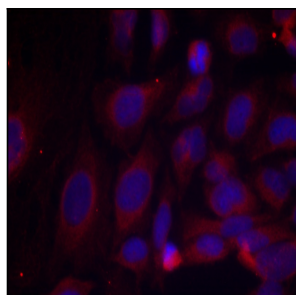


Figure 1: Immunofluorescence staining of methanol-fixed HeLa cells using NFkB p105 (phospho-Ser893) antibody (35-1017 Red).

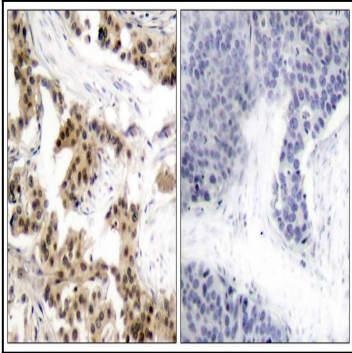


Figure 2: Immunohistochemical analysis of paraffin-embedded human breast carcinoma tissue using NFkB p105 (phospho-Ser893) antibody (35-1017).