

35-1005: Polyclonal Antibody to Raf1 (Phospho-Ser259)

| | |
|--------------------------------|--|
| Clonality : | Polyclonal |
| Application : | IHC,WB |
| Reactivity : | Rat,Mouse,Human |
| Gene : | RAF1 |
| Gene ID : | 5894 |
| Uniprot ID : | P04049 |
| Format : | Purified |
| Alternative Name : | C-RAF, C-Raf, CRAF |
| Isotype : | Rabbit IgG |
| Immunogen Information : | Peptide sequence around phosphorylation site of serine 259 (S-T-S(p)-T-P) derived from Human Raf1. |

Description

Involved in the transduction of mitogenic signals from the cell membrane to the nucleus. Part of the Ras-dependent signaling pathway from receptors to the nucleus. Protects cells from apoptosis mediated by STK3. Dougherty M K, et al. (2005) Mol Cell. 17(2): 215-224. Hekman M, et al. (2005) FEBS Lett. 579(2): 464-468. Avruch J, et al. (1994) Trends Biochem. Sci. 19, 279-283. Chong H, et al. (2001) EMBO J. 20, 3716-3727. King A J, et al. (1998) Nature. 396:180-183.

Product Info

| | |
|----------------------------|--|
| Amount : | 50 µl / 100 µl |
| Content : | Supplied at 1.0mg/mL in phosphate buffered saline (without Mg ²⁺ and Ca ²⁺), pH 7.4, 150mM NaCl, 0.02% sodium azide and 50% glycerol. |
| Storage condition : | Store the antibody at 4°C, stable for 6 months. For long-term storage, store at -20°C. Avoid repeated freeze and thaw cycles. |

Application Note

Predicted MW: 73kd, Western blotting: 1:500~1:1000, Immunohistochemistry: 1:50~1:100

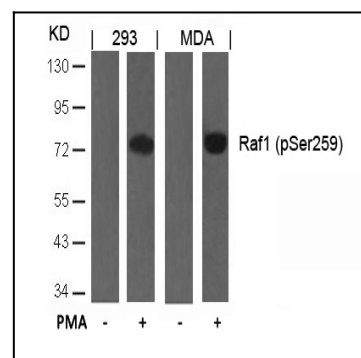


Figure 1: Western blot analysis of extracts from 293 and MDA cells untreated or treated with PMA using Raf1(Phospho-Ser259) Antibody 35-1005 .

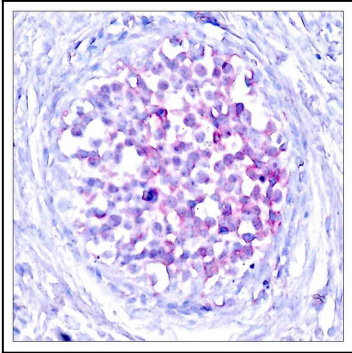


Figure 2: Immunohistochemical analysis of paraffin-embedded human breast carcinoma tissue using Raf1(Phospho-Ser259) Antibody 35-1005 .