

## 10-1032: Monoclonal Antibody to Human ATF2 (Clone: ABM16E7)

<b>Clonality :</b>	Monoclonal
<b>Clone Name :</b>	ABM16E7
<b>Application :</b>	WB
<b>Reactivity :</b>	Mouse,Human
<b>Gene :</b>	ATF2
<b>Gene ID :</b>	1386
<b>Uniprot ID :</b>	P15336
<b>Format :</b>	Purified
<b>Alternative Name :</b>	Cyclic AMP-dependent transcription factor ATF-2 ,cAMP-dependent transcription factor ATF-2,Activating transcription factor 2,Cyclic AMP-responsive element-binding protein 2,HB16,Histone acetyltransferase ATF2,cAMP response element-binding protein CRE-BP1
<b>Isotype :</b>	Mouse IgG1, kappa
<b>Immunogen Information :</b>	A partial length recombinant protein of human ATF2 was used as immunogen for this antibody.

### Product Info

<b>Amount :</b>	25 µg / 100 µg
<b>Purification :</b>	Protein G Chromatography
<b>Content :</b>	25 µg in 50 µl/100 µg in 200 µl PBS containing 0.05% BSA and 0.05% sodium azide. Sodium azide is highly toxic.
<b>Storage condition :</b>	Store the antibody at 4°C, stable for 6 months. For long-term storage, store at -20°C. Avoid repeated freeze and thaw cycles.

### Application Note

WB: 4-6 µg/ml

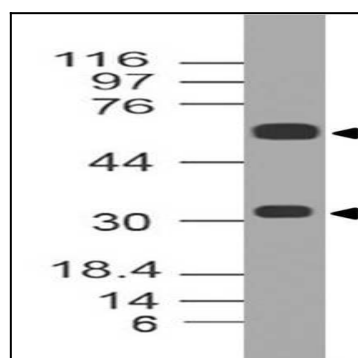


Figure-1: Western blot analysis of ATF2. Anti- ATF2 antibody (Clone: ABM16E7) was tested at 2 µg/ml on PC3 lysate.

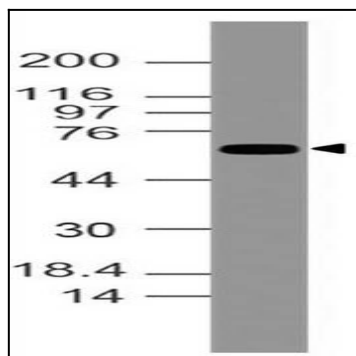


Figure-2: Western blot analysis of ATF2. Anti- ATF2 antibody (Clone: ABM16E7) was tested at 4  $\mu$ g/ml on EL-4 lysate.