

10-4175-F: Monoclonal Antibody to Human CD23 (Clone: 152-5E5) FITC conjugated

Clonality :	Monoclonal
Clone Name :	152-5E5
Application :	FACS
Reactivity :	Human
Conjugate :	FITC
Gene :	FCER2
Gene ID :	2208
Uniprot ID :	P06734
Format :	Purified
Alternative Name :	FCER2, CD23A, CLEC4J, FCE2, IGBEF
Isotype :	Mouse IgG1 Kappa

Product Info

Amount :	25 µg / 100 µg
Purification :	Protein G Chromatography
Content :	0.2 mg/ml in Tris buffer containing 0.05% Azide
Storage condition :	Store the antibody at 4°C, stable for 6 months.

Application Note

FACS: 0.5-1 µg/10⁶ cells

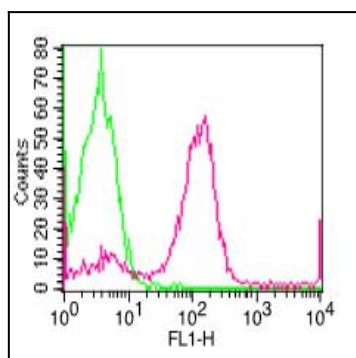


Fig-1: Cell Surface flow analysis of hCD23 in PBMC (Lymphocytes) using 1 µg/10⁶ cells. Green represents isotype control (ABEOMICS); red represents FITC conjugated anti-hCD23 antibody (104175F).