

## 10-4152-F: Monoclonal Antibody to Human CD50 (Clone: 186-2G9) FITC conjugated

<b>Clonality :</b>	Monoclonal
<b>Clone Name :</b>	186-2G9
<b>Application :</b>	FACS
<b>Reactivity :</b>	Human
<b>Conjugate :</b>	FITC
<b>Gene :</b>	ICAM3
<b>Gene ID :</b>	3385
<b>Uniprot ID :</b>	P32942
<b>Format :</b>	Purified
<b>Alternative Name :</b>	Intercellular adhesion molecule 3,CDw50,ICAM-R,ICAM-Rintercellular adhesion molecule-6
<b>Isotype :</b>	Mouse IgG2b Kappa
<b>Immunogen Information :</b>	Stimulated human leukocytes were used as immunogen for this antibody.

### Product Info

<b>Amount :</b>	25 µg / 100 µg
<b>Purification :</b>	Protein G Chromatography
<b>Content :</b>	0.2 mg/ml in Tris buffer containing 0.05% Azide
<b>Storage condition :</b>	Store the antibody at 4°C, stable for 6 months.

### Application Note

FACS: 1-2 µg/10<sup>6</sup> cells

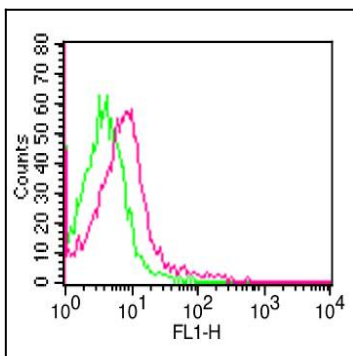


Fig-1: Cell Surface flow analysis of hCD50 in PBMC (Lymphocyte gated) using 1 µg/10<sup>6</sup> cells. Green represents isotype control (ABEOMICS); red represents FITC conjugate anti-hCD50 antibody (10-4152F).