

10-4145-F: Monoclonal Antibody to Human CD11a (Clone: DF1524) FITC conjugated

Clonality :	Monoclonal
Clone Name :	DF1524
Application :	FACS
Reactivity :	Human
Conjugate :	FITC
Gene :	ITGAL
Gene ID :	3683
Uniprot ID :	P20701
Format :	Purified
Alternative Name :	Integrin alpha-L,CD11 antigen-like family member A,Leukocyte adhesion glycoprotein LFA-1 alpha chain,Leukocyte function-associated molecule 1 alpha chain,CD11a
Isotype :	Mouse IgG1 Kappa
Immunogen Information :	full length Recombinant protein of human CD11a was used as immunogen for this antibody.

Product Info

Amount :	100 µg
Purification :	Protein G Chromatography
Content :	0.2 mg/ml in Tris buffer containing 0.05% Azide
Storage condition :	Store the antibody at 4°C, stable for 6 months.

Application Note

FACS: 0.5-1 µg/10⁶ cells

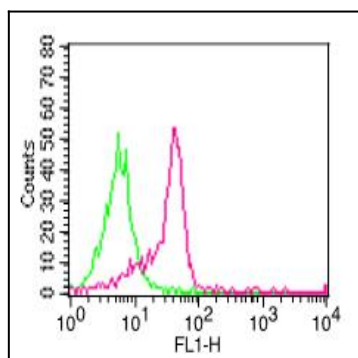


Fig-1: Cell Surface flow analysis of hCD11a in PBMC (Monocyte gated) using 0.5 µg/10⁶ cells. Green represents isotype control (ABEOMICS); red represents FITC conjugate anti-hCD11a antibody (10-4145F).