

10-4141: Monoclonal Antibody to Human CD16 (Clone: CB16)

Clonality :	Monoclonal
Clone Name :	CB16
Application :	FACS
Reactivity :	Human
Gene :	FCGR3A
Gene ID :	2214
Uniprot ID :	P08637
Format :	Purified
Alternative Name :	Low affinity immunoglobulin gamma Fc region receptor III-A,CD16a antigen, Fc-gamma RIII-alpha,Fc-gamma RIII,Fc-gamma RIIIa,IgG Fc receptor III-2,
Isotype :	Mouse IgG1 Kappa

Product Info

Amount :	25 µg / 100 µg
Purification :	Protein G Chromatography
Content :	25 µg in 50 µl/100 µg in 200 µl PBS containing 0.05% BSA and 0.05% sodium azide. Sodium azide is highly toxic.
Storage condition :	Store the antibody at 4°C, stable for 6 months. For long-term storage, store at -20°C. Avoid repeated freeze and thaw cycles.

Application Note

FACS: 0.5-1 µg/10⁶ cells

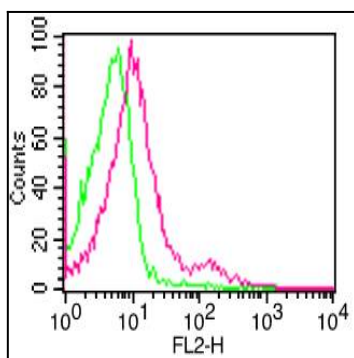


Fig-1: Cell Surface flow analysis of hCD16 in PBMC (Lymphocytes) using 0.5 µg/10⁶ cells. Green represents isotype control (ABEOMICS); red represents anti-hCD16 antibody (10-4141). Goat anti-mouse PE conjugated secondary antibody (ABEOMICS) was used.