

10-4134: Monoclonal Antibody to Human MHCII/HLA DQ (Clone: SPVL3)

Clonality :	Monoclonal
Clone Name :	SPVL3
Application :	FACS,IF
Reactivity :	Human
Gene :	HLA-DQA1
Gene ID :	3117
Uniprot ID :	P01909
Format :	Purified
Alternative Name :	HLA class II histocompatibility antigen,DQ alpha 1 chain,DC-1 alpha chain,DC-alpha,HLA-DCA,MHC class II DQA1
Isotype :	Mouse IgG2a Kappa
Immunogen Information :	Cells of T4 and CTL clone HG-38 were used as immunogen for this antibody.

Product Info

Amount :	25 µg / 100 µg
Purification :	Protein G Chromatography
Content :	25 µg in 50 µl/100 µg in 200 µl PBS containing 0.05% BSA and 0.05% sodium azide. Sodium azide is highly toxic.
Storage condition :	Store the antibody at 4°C, stable for 6 months. For long-term storage, store at -20°C. Avoid repeated freeze and thaw cycles.

Application Note

FACS: 0.5-1 µg/10⁶ cells

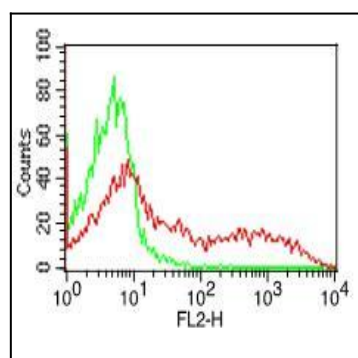


Fig-1: Cell Surface flow analysis of MHCII-DLADQ in PBMC (Lymphocyte gated) using 0.5 µg/10⁶ cells. Green represents isotype control (ABEOMICS); red represents anti-hMHCII-HLADQ antibody (10-4134, clone:SPVL3). Goat anti-mouse PE conjugated secondary antibody (ABEOMICS) was used.