

## 10-4130: Monoclonal Antibody to Human CD6 (Clone: SPV14)

<b>Clonality :</b>	Monoclonal
<b>Clone Name :</b>	SPV14
<b>Application :</b>	FACS
<b>Reactivity :</b>	Human
<b>Gene :</b>	CD6
<b>Gene ID :</b>	923
<b>Uniprot ID :</b>	P30203
<b>Format :</b>	Purified
<b>Alternative Name :</b>	CD6 antigenFLJ44171,CD6 molecule,CD6,T12 Tp120,TP120T-cell differentiation antigen CD6
<b>Isotype :</b>	Mouse IgG2a Kappa
<b>Immunogen Information :</b>	CD8+ cytotoxic T-cell were used as immunogen for this antibody.

### Product Info

<b>Amount :</b>	25 µg / 100 µg
<b>Purification :</b>	Protein G Chromatography
<b>Content :</b>	25 µg in 50 µl/100 µg in 200 µl PBS containing 0.05% BSA and 0.05% sodium azide. Sodium azide is highly toxic.
<b>Storage condition :</b>	Store the antibody at 4°C, stable for 6 months. For long-term storage, store at -20°C. Avoid repeated freeze and thaw cycles.

### Application Note

FACS: 0.5-1 µg/10<sup>6</sup> cells

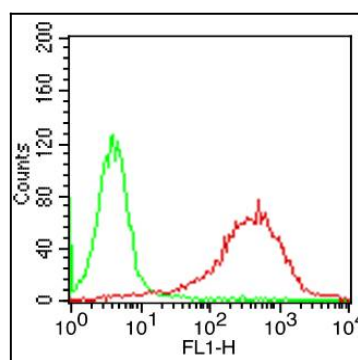


Fig-1: Cell Surface flow analysis of hCD6 in PBMC (Lymphocyte gated) using 0.5 µg/10<sup>6</sup> cells.. Green represents isotype control (ABEOMICS); red represents anti-hCD6 antibody (10-4130, clone:SPV14) Goat anti-mouse FITC conjugated secondary antibody (ABEOMICS) was used.