

## 10-4123-F: Monoclonal Antibody to Mouse CD3 (Clone: 145-2C11) FITC conjugated

<b>Clonality :</b>	Monoclonal
<b>Clone Name :</b>	145-2C11
<b>Application :</b>	FACS
<b>Reactivity :</b>	Mouse
<b>Conjugate :</b>	FITC
<b>Gene :</b>	Cd247
<b>Gene ID :</b>	12503
<b>Uniprot ID :</b>	P24161
<b>Format :</b>	Purified
<b>Alternative Name :</b>	T-cell surface glycoprotein CD3 zeta chain,T-cell receptor T3 zeta chain,CD247
<b>Isotype :</b>	Hamster IgG
<b>Immunogen Information :</b>	Mouse BM10-37 cytotoxic T lymphocytes were used as immunogen for this antibody.

### Description

CD3 is one of the several invariant chains that the variable chains of TCR: Alpha beta or Gamma delta TCR contains, and which support surface TCR expression and transduce the TCR signal. CD3D, along with four other CD3 subunits, binds either TCR alpha/beta or TCR gamma/delta to form the TCR/CD3 complex on the surface of T-cells. Defects in this gene are a cause of severe combined immunodeficiency autosomal recessive T-cell-negative/B-cell-positive/NK-cell-positive (SCIDBNK).

### Product Info

<b>Amount :</b>	25 µg / 100 µg
<b>Purification :</b>	Protein G Chromatography
<b>Content :</b>	0.2 mg/ml in Tris buffer containing 0.05% Azide
<b>Storage condition :</b>	Store the antibody at 4°C, stable for 6 months.

### Application Note

FACS: 0.5-1 µg/10<sup>6</sup> cells

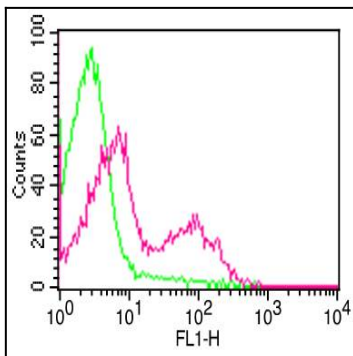


Figure-1: Cell Surface flow analysis of mouse CD3 in mouse splenocytes using 0.5 µg/10<sup>6</sup> cells. Green represents isotype control; red represents FITC conjugate mouse CD3 antibody (10-4123F).