

## 10-4040: Monoclonal Antibody to Siglec-H (Clone: ABM2H66)

<b>Clonality :</b>	Monoclonal
<b>Clone Name :</b>	ABM2H66
<b>Application :</b>	WB
<b>Reactivity :</b>	Mouse
<b>Gene :</b>	Siglech
<b>Gene ID :</b>	233274
<b>Uniprot ID :</b>	Q3Y597
<b>Format :</b>	Purified
<b>Alternative Name :</b>	SIGLEC-H
<b>Isotype :</b>	Rat IgG2a, Kappa
<b>Immunogen Information :</b>	A partial length recombinant mouse Siglec-H protein (amino acids 109-309) was used as the immunogen for this antibody.

### Description

Siglec H (Sialic acid binding Ig-like lectin H) is cell surface protein of murine origin. Siglec H is mainly distributed in eosinophils and it binds to sialic acid. Siglec H lacks tyrosine based signaling motifs in its cytoplasmic tail, which gives it a special structural identity for binding sialic acid without binding with carbohydrates. Siglec H is specifically expressed in bone marrow, spleen, blood and lymph nodes.

### Product Info

<b>Amount :</b>	25 µg / 100 µg
<b>Purification :</b>	Protein G Chromatography
<b>Content :</b>	25 µg in 50 µl/100 µg in 200 µl PBS containing 0.05% BSA and 0.05% sodium azide. Sodium azide is highly toxic.
<b>Storage condition :</b>	Store the antibody at 4°C, stable for 6 months. For long-term storage, store at -20°C. Avoid repeated freeze and thaw cycles.

### Application Note

WB: 4-6 µg/ml

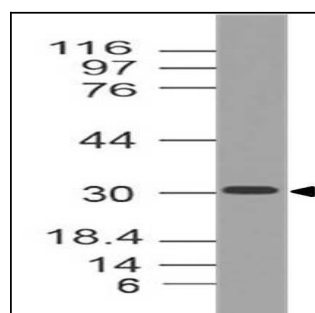


Figure-1: Western blot analysis of Siglec-H. Anti-Siglec-H antibody (Clone: ABM2H66) was used at 4 µg/ml on mHeart lysate.