

31-3602: Mouse Anti-Cytokeratin 18-FITC

Clonality :	Monoclonal
Clone Name :	SB38b
Application :	ELISA,FACS,WB
Conjugate :	FITC
Gene :	KRT18
Gene ID :	3875
Uniprot ID :	P05783
Alternative Name :	Cell proliferation-inducing gene 46 protein, CK-18, Keratin, type I cytoskeletal 18
Isotype :	Mouse IgG2b

Product Info

Amount :	0.1 mg
Content :	0.5 mg/ml, 0.2 ml, Supplied in PBS/Sodium azide
Storage condition :	Store at 2-8°C

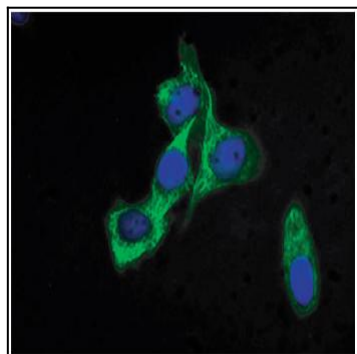


Figure 1: Human mammary gland carcinoma cell line HCC38 was stained with Mouse Anti-Cytokeratin 18-FITC .