

### 31-3601: Mouse Anti-Cytokeratin 18

<b>Clonality :</b>	Monoclonal
<b>Clone Name :</b>	SB38b
<b>Application :</b>	ELISA,FACS,WB
<b>Conjugate :</b>	Unconjugated
<b>Gene :</b>	KRT18
<b>Gene ID :</b>	3875
<b>Uniprot ID :</b>	P05783
<b>Alternative Name :</b>	Cell proliferation-inducing gene 46 protein, CK-18, Keratin, type I cytoskeletal 18
<b>Isotype :</b>	Mouse IgG2b

#### Product Info

<b>Amount :</b>	0.1 mg
<b>Content :</b>	0.1 mg/ml, 1.0 ml, Supplied in borate buffered saline, pH 8.2; No preservatives or amine-containing buffer salts added
<b>Storage condition :</b>	Store at 2-8°C

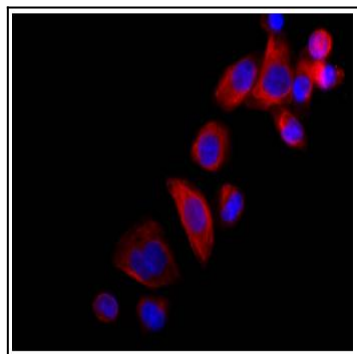


Figure 1: Human pancreatic carcinoma cell line MIA PaCa-2 was stained with Mouse Anti-Cytokeratin 18 followed by Donkey Anti-Mouse IgG(H+L), Multi-Species SP ads-AF555 and DAPI.

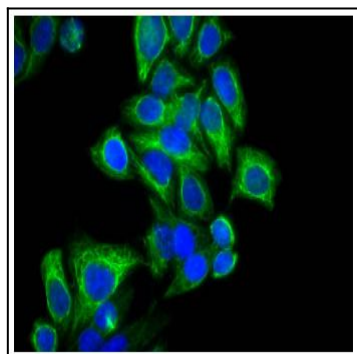


Figure 2: Human carcinoma cell line HEP-2 was stained with Mouse Anti-Cytokeratin 18 followed by Goat Anti-Mouse IgG2b, Human/Bovine/Horse SP ads-FITC and DAPI.