

31-3599: Mouse Anti-Cytokeratin 8-FITC

Clonality :	Monoclonal
Clone Name :	SB37b
Application :	IHC,IHC-P,IP,ELISA,FACS,WB
Conjugate :	FITC
Gene :	KRT8
Gene ID :	3856
Uniprot ID :	P05787
Alternative Name :	Keratin, type II cytoskeletal 8, CK-8, Type-II keratin Kb8, K8
Isotype :	Mouse IgG2a

Product Info

Amount :	0.1 mg
Content :	0.5 mg/ml, 0.2 ml, Supplied in PBS/Sodium azide
Storage condition :	Store at 2-8°C

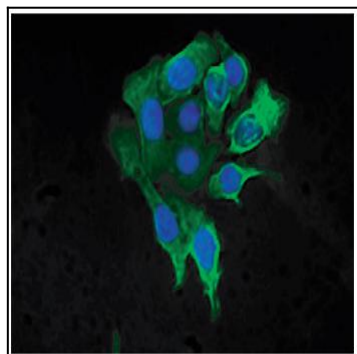


Figure 1: Human pancreatic carcinoma cell line MIA PaCa-2 was stained with Mouse Anti-Cytokeratin 8-FITC .