

### 31-3338: Mouse Anti-Human CD106-PE

**Clonality :** Monoclonal  
**Clone Name :** 1.G11B1  
**Application :** IHC,IP,ELISA,FACS,WB,IHC-Fr  
**Conjugate :** PE  
**Gene :** VCAM1  
**Gene ID :** 7412  
**Uniprot ID :** P19320  
**Alternative Name :** VCAM1, L1CAM  
**Isotype :** Mouse IgG1, kappa

#### Product Info

**Amount :** 100 Tests  
**Content :** 1.0 ml, Supplied in PBS/Sodium azide and a stabilizing agent  
**Storage condition :** Store at 2-8°C

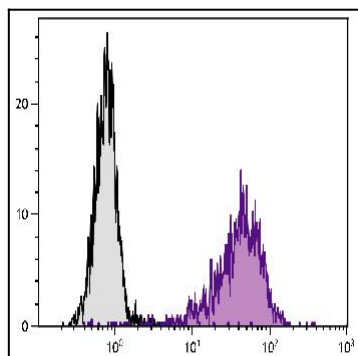


Figure 1: TNF±-stimulated human endothelial cell line HUV-EC-C was stained with Mouse Anti-Human CD106-PE .