

31-3332: Mouse Anti-Human CD62E/CD62P-PE

Clonality : Monoclonal
Clone Name : 1.2B6
Application : IHC,IP,ELISA,FACS,WB,IHC-Fr
Conjugate : PE
Gene : SELE
Gene ID : 6401
Uniprot ID : P16581
Alternative Name : E-selectin, CD62 antigen-like family member E, Endothelial leukocyte adhesion molecule 1, Leukocyte-endothelial cell adhesion molecule 2
Isotype : Mouse IgG1

Product Info

Amount : 100 Tests
Content : 1.0 ml, Supplied in PBS/Sodium azide and a stabilizing agent
Storage condition : Store at 2-8°C

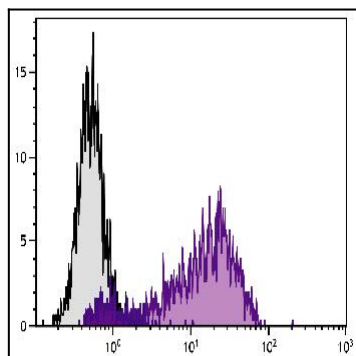


Figure 1: PMA and Ionomycin-stimulated human endothelial cell line HUV-EC-C was stained with Mouse Anti-Human CD62E/CD62P-PE .