

### 31-3296: Mouse Anti-Human CD20-PE/CY7

**Clonality :** Monoclonal  
**Clone Name :** B-Ly1  
**Application :** IHC,IHC-P,IP,FACS,IHC-Fr  
**Conjugate :** PE/CY7  
**Gene :** MS4A1  
**Gene ID :** 931  
**Uniprot ID :** P11836  
**Alternative Name :** MS4A1, CD20  
**Isotype :** Mouse IgG1, kappa

#### Product Info

**Amount :** 100 Tests  
**Content :** 1.0 ml, Supplied in PBS/Sodium azide and a stabilizing agent  
**Storage condition :** Store at 2-8°C

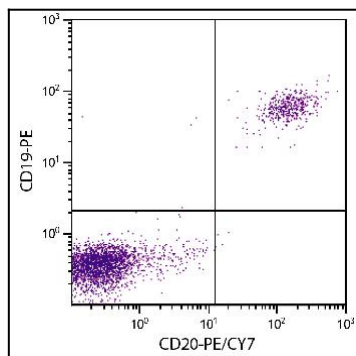


Figure 1: Human peripheral blood lymphocytes were stained with Mouse Anti-Human CD20-PE/CY7 and Mouse Anti-Human CD19-PE .