

## 31-3223: Mouse Anti-Human Lambda-Biotin Conjugated

**Clonality :** Monoclonal  
**Clone Name :** JDC-12  
**Application :** IP,ELISA,FACS,WB  
**Conjugate :** BIOTIN  
**Isotype :** Mouse IgG1, kappa

### Product Info

**Amount :** 0.5 mg  
**Content :** 0.5 mg/ml, 1.0 ml, Supplied in PBS/Sodium azide  
**Storage condition :** Store at 2-8°C

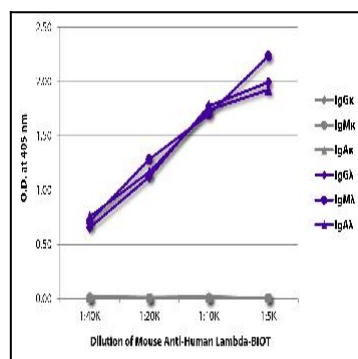


Figure 1: ELISA plate was coated with purified human IgG $\kappa$ , IgM $\kappa$ , IgA $\kappa$ , IgG $\lambda$ , IgM $\lambda$ , and IgA $\lambda$ . Immunoglobulins were detected with serially diluted Mouse Anti-Human Lambda-Biotin followed by Streptavidin-HRP .