

## 31-3160: Mouse Anti-Human IgD-PE

**Clonality :** Monoclonal  
**Clone Name :** IADB6  
**Application :** IHC,IHC-P,IP,ELISA,FACS,IHC-Fr  
**Conjugate :** PE  
**Isotype :** Mouse IgG2a, kappa

### Product Info

**Amount :** 0.1 mg  
**Content :** 0.1 mg/ml, 1.0 ml, Supplied in PBS/Sodium azide and a stabilizing agent  
**Storage condition :** Store at 2-8°C

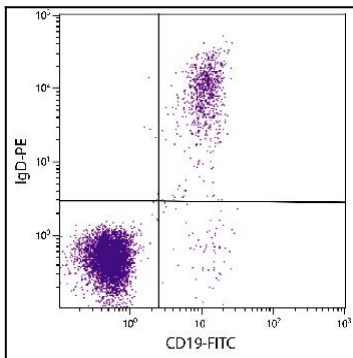


Figure 1: Human blood peripheral lymphocytes were stained with Mouse Anti-Human IgD-PE and Mouse Anti-Human CD19-FITC .

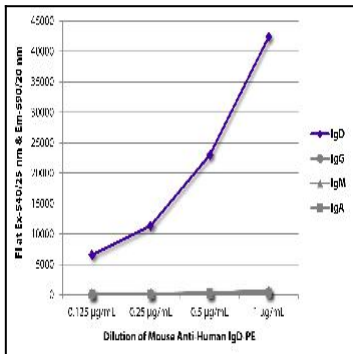


Figure 2: ELISA plate was coated with purified human IgD, IgG, IgM, and IgA. Immunoglobulins were detected with serially diluted Mouse Anti-Human IgD-PE .