

### 31-3144: Mouse Anti-Human IgM-PE

**Clonality :** Monoclonal  
**Clone Name :** SA-DA4  
**Application :** IHC,IP,ELISA,FACS,WB,IHC-Fr  
**Conjugate :** PE  
**Isotype :** Mouse IgG1

#### Product Info

**Amount :** 0.1 mg  
**Content :** 0.1 mg/ml, 1.0 ml, Supplied in PBS/Sodium azide and a stabilizing agent  
**Storage condition :** Store at 2-8°C

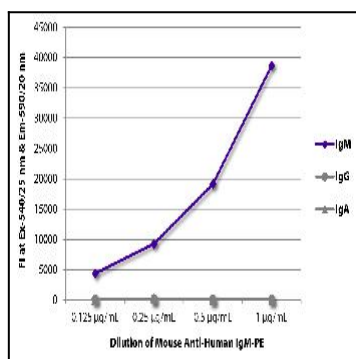


Figure 1: ELISA plate was coated with purified human IgM, IgG, and IgA. Immunoglobulins were detected with serially diluted Mouse Anti-Human IgM-PE .

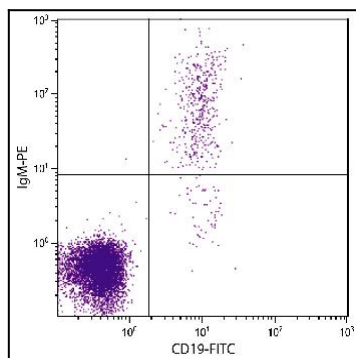


Figure 2: Human blood peripheral lymphocytes were stained with Mouse Anti-Human IgM-PE and Mouse Anti-Human CD19-FITC .