

### 31-3063: Mouse Anti-Chicken IgM-PE

**Clonality :** Monoclonal  
**Clone Name :** M-1  
**Application :** IHC,IP,ELISA,FACS,IHC-Fr  
**Conjugate :** PE  
**Isotype :** Mouse IgG2b

#### Product Info

**Amount :** 0.1 mg  
**Content :** 0.1 mg/ml, 1.0 ml, Supplied in PBS/Sodium azide and a stabilizing agent  
**Storage condition :** Store at 2-8°C

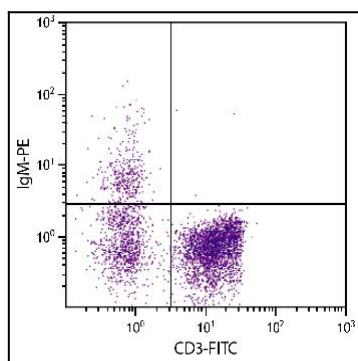


Figure 1: Chicken peripheral blood mononuclear cells were stained with Mouse Anti-Chicken IgM-PE and Mouse Anti-Chicken CD3-FITC .

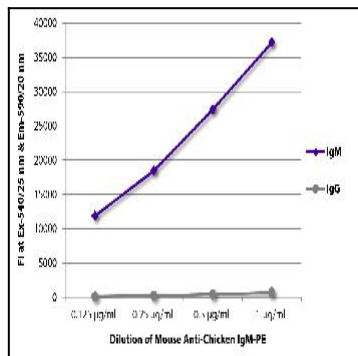


Figure 2: ELISA plate was coated with purified chicken IgM and IgG. Immunoglobulins were detected with serially diluted Mouse Anti-Chicken IgM-PE .