

### 31-3047: Mouse Anti-Chicken CD45-PE

**Clonality :** Monoclonal  
**Clone Name :** LT40  
**Application :** IHC,IHC-P,IP,FACS,IHC-Fr  
**Conjugate :** PE  
**Gene :** ptpnc  
**Uniprot ID :** Q9I8D7  
**Alternative Name :** Leukocyte common antigen, CD45  
**Isotype :** Mouse IgM, kappa

#### Product Info

**Amount :** 0.1 mg  
**Content :** 0.1 mg/ml, 1.0 ml, Supplied in PBS/Sodium azide and a stabilizing agent  
**Storage condition :** Store at 2-8°C

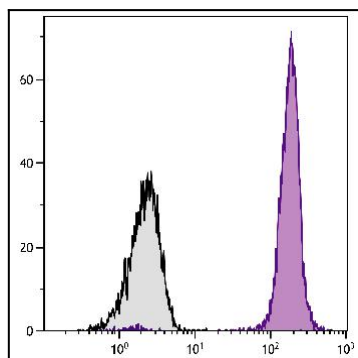


Figure 1: Chicken peripheral blood mononuclear cells were stained with Mouse Anti-Chicken CD45-PE .