

## 31-3024: Mouse Anti-Chicken TCRgd-FITC

**Clonality :** Monoclonal  
**Clone Name :** TCR-1  
**Application :** IHC,IHC-P,IP,FACS,IHC-Fr  
**Conjugate :** FITC  
**Isotype :** Mouse IgG1

### Product Info

**Amount :** 0.5 mg  
**Content :** 0.5 mg/ml, 1.0 ml, Supplied in PBS/Sodium azide  
**Storage condition :** Store at 2-8°C

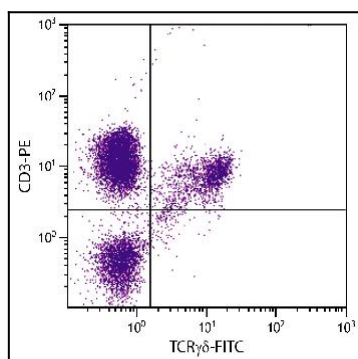


Figure 1: Chicken peripheral blood mononuclear cells were stained with Mouse Anti-Chicken TCR $\gamma\delta$ -FITC and Mouse Anti-Chicken CD3-PE .