

### 31-3012: Mouse Anti-Chicken CD3-R-PE/CY5

**Clonality :** Monoclonal  
**Clone Name :** CT-3  
**Application :** IHC,IHC-P,IP,FACS,IHC-Fr  
**Conjugate :** R-PE/CY5  
**Gene :** CD3E  
**Uniprot ID :** Q98910  
**Alternative Name :** CD3E  
**Isotype :** Mouse IgG1

#### Product Info

**Amount :** 0.1 mg  
**Content :** 0.1 mg/ml, 1.0 ml, Supplied in PBS/Sodium azide and a stabilizing agent  
**Storage condition :** Store at 2-8°C

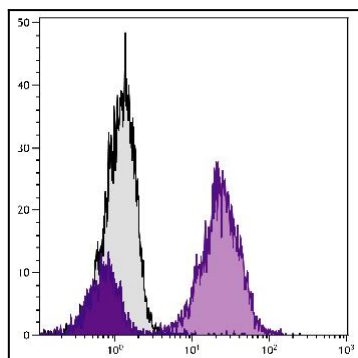


Figure 1: Chicken peripheral blood mononuclear cells were stained with Mouse Anti-Chicken CD3-SPRD .