

### 31-3009: Mouse Anti-Chicken CD3-FITC

**Clonality :** Monoclonal  
**Clone Name :** CT-3  
**Application :** IP,IHC-Fr,IHC,FACS  
**Conjugate :** FITC  
**Gene :** CD3E  
**Uniprot ID :** Q98910  
**Alternative Name :** CD3E  
**Isotype :** Mouse IgG1

#### Product Info

**Amount :** 0.5 mg  
**Content :** 0.5 mg/ml, 1.0 ml, Supplied in PBS/Sodium azide  
**Storage condition :** Store at 2-8°C

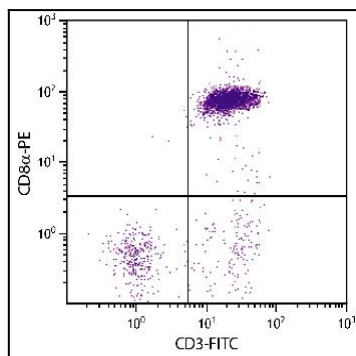


Figure 1: Chicken peripheral blood mononuclear cells were stained with Mouse Anti-Chicken CD3-FITC and Mouse Anti-Chicken CD8 $\alpha$ -PE .