

### 31-1801: Rat Anti-Mouse CD22-PE

**Clonality :** Monoclonal  
**Clone Name :** 2D6  
**Application :** IHC,IHC-P,IP,FACS,IHC-Fr  
**Conjugate :** PE  
**Gene :** Cd22  
**Gene ID :** 12483  
**Uniprot ID :** P35329  
**Alternative Name :** Cd22, Lyb-8, Siglec2  
**Isotype :** Rat IgG1, kappa

#### Product Info

**Amount :** 0.1 mg  
**Content :** 0.1 mg/ml, 1.0 ml, Supplied in PBS/Sodium azide and a stabilizing agent  
**Storage condition :** Store at 2-8°C

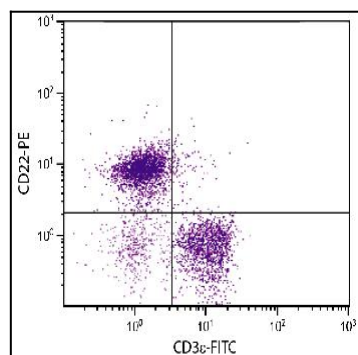


Figure 1: BALB/c mouse splenocytes were stained with Rat Anti-Mouse CD22-PE and Rat Anti-Mouse CD3e-FITC .