

## 31-1557: Rat Anti-Mouse Lambda-PE

**Clonality :** Monoclonal  
**Clone Name :** JC5-1  
**Application :** IHC,ELISA,FACS,WB,IHC-Fr  
**Conjugate :** PE  
**Isotype :** Rat IgG2b, kappa

### Product Info

**Amount :** 0.1 mg  
**Content :** 0.1 mg/ml, 1.0 ml, Supplied in PBS/Sodium azide and a stabilizing agent  
**Storage condition :** Store at 2-8°C

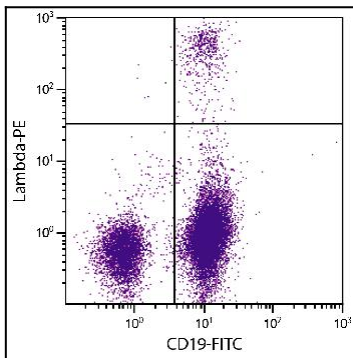


Figure 1: BALB/c mouse splenocytes were stained with Rat Anti-Mouse Lambda-PE and Rat Anti-Mouse CD19-FITC .

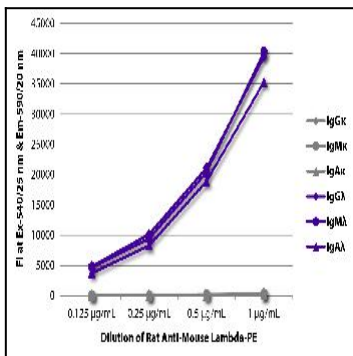


Figure 2: ELISA plate was coated with purified mouse IgG<sup>1</sup>, IgM<sup>1</sup>, IgA<sup>1</sup>, IgG<sup>1</sup>, IgM<sup>1</sup>, and IgA<sup>1</sup>. Immunoglobulins were detected with serially diluted Rat Anti-Mouse Lambda-PE .