

31-1556: Rat Anti-Mouse Lambda-PE

Clonality : Monoclonal
Clone Name : JC5-1
Application : IHC,ELISA,FACS,WB,IHC-Fr
Conjugate : PE
Isotype : Rat IgG2b, kappa

Product Info

Amount : 0.2 mg
Content : 0.1 mg/ml, 2.0 ml, Supplied in PBS/Sodium azide and a stabilizing agent
Storage condition : Store at 2-8°C

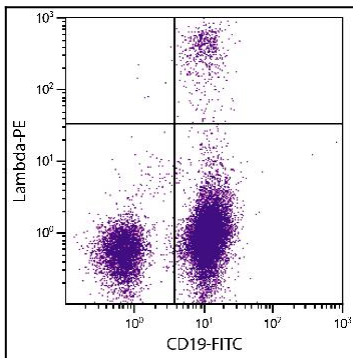


Figure 1: BALB/c mouse splenocytes were stained with Rat Anti-Mouse Lambda-PE and Rat Anti-Mouse CD19-FITC .

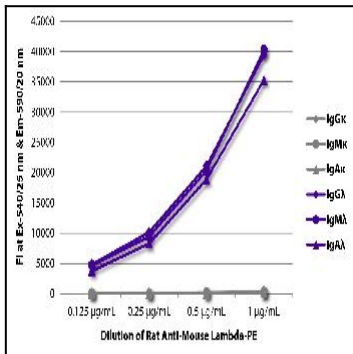


Figure 2: ELISA plate was coated with purified mouse IgG κ , IgM κ , IgA κ , IgG λ , IgM λ , and IgA λ . Immunoglobulins were detected with serially diluted Rat Anti-Mouse Lambda-PE .