

### 31-1553: Rat Anti-Mouse Lambda-AP

**Clonality :** Monoclonal  
**Clone Name :** JC5-1  
**Application :** IHC,ELISA,FACS,WB,IHC-Fr  
**Conjugate :** AKP  
**Isotype :** Rat IgG2b, kappa

#### Product Info

**Amount :** 1.0 ml  
**Content :** 1.0 ml, Supplied in a stock solution 50 mM Tris/1 mM Magnesium chloride/50% glycerol, pH 8.0, containing Sodium azide as preservative  
**Storage condition :** Store at 2-8°C

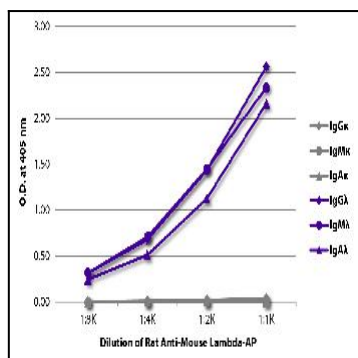


Figure 1: ELISA plate was coated with purified mouse IgG $\kappa$ , IgM $\kappa$ , IgA $\kappa$ , IgG $\lambda$ , IgM $\lambda$ , and IgA $\lambda$ . Immunoglobulins were detected with serially diluted Rat Anti-Mouse Lambda-AP .