

### 31-1550: Rat Anti-Mouse Kappa-PE

**Clonality :** Monoclonal  
**Clone Name :** 187.1  
**Application :** IHC,IP,ELISA,FACS,WB,IHC-Fr  
**Conjugate :** PE  
**Isotype :** Rat IgG1

#### Product Info

**Amount :** 0.1 mg  
**Content :** 0.1 mg/ml, 1.0 ml, Supplied in PBS/Sodium azide and a stabilizing agent  
**Storage condition :** Store at 2-8°C

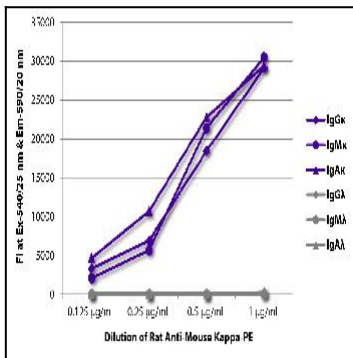


Figure 1: ELISA plate was coated with purified mouse IgG $\kappa$ , IgM $\kappa$ , IgA $\kappa$ , IgG $\lambda$ , IgM $\lambda$ , and IgA $\lambda$ . Immunoglobulins were detected with serially diluted Rat Anti-Mouse Kappa-PE .

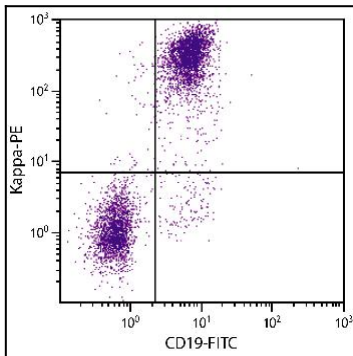


Figure 2: BALB/c mouse splenocytes were stained with Rat Anti-Mouse Kappa-PE and Rat Anti-Mouse CD19-FITC .