

### 31-1534: Rat Anti-Mouse IgG2a-PE

**Clonality :** Monoclonal  
**Clone Name :** SB84a  
**Application :** IHC,ELISA,FACS,WB,IHC-Fr  
**Conjugate :** PE  
**Isotype :** Rat IgG1

#### Product Info

**Amount :** 0.2 mg  
**Content :** 0.1 mg/ml, 2.0 ml, Supplied in PBS/Sodium azide and a stabilizing agent  
**Storage condition :** Store at 2-8°C

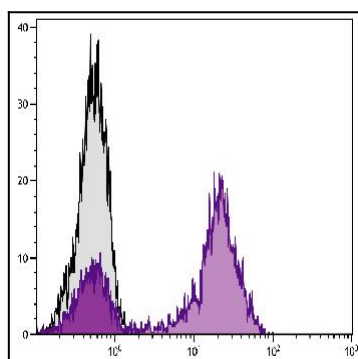


Figure 1: Human peripheral blood lymphocytes were stained with Mouse Anti-Human CD5 (Isotype - Mouse IgG2a) followed by Rat Anti-Mouse IgG2a-PE .

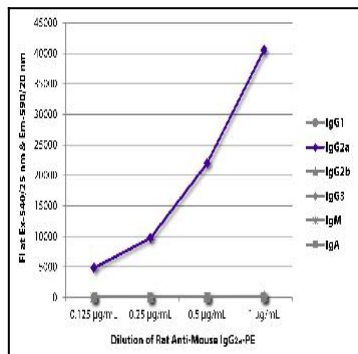


Figure 2: ELISA plate was coated with purified mouse IgG1, IgG2a, IgG2b, IgG3, IgM, and IgA. Immunoglobulins were detected with serially diluted Rat Anti-Mouse IgG2a-PE .