

## 31-1379: Goat Anti-Mouse Lambda-HRP Conjugated

**Application :** IP,IHC-Fr,ELISA,IHC,FACS,WB

**Conjugate :** HRP

**Isotype :** Goat IgG

### Product Info

**Amount :** 1.0 ml

**Purification :** Affinity chromatography on mouse lambda light chains covalently linked to agarose

**Content :** 1.0 ml, Supplied in a stock solution in 50% glycerol/50% PBS, pH 7.4; No preservative added

**Storage condition :** Store at 2-8°C

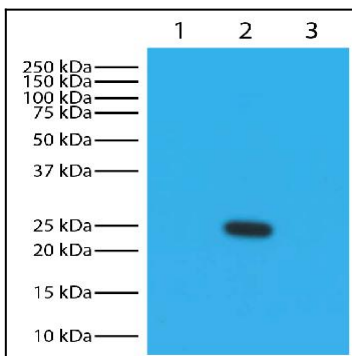


Figure 1: Lane 1 - Mouse IgG1, Lane 2 - Mouse IgG2a, Lane 3 - Mouse IgG2b. Mouse immunoglobulins above were resolved by electrophoresis under reducing conditions, transferred to PVDF membrane, and probed with Goat Anti-Mouse Lambda-HRP. Proteins were visualized using chemiluminescent detection.

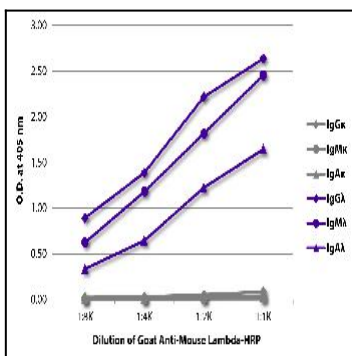


Figure 2: ELISA plate was coated with purified mouse IgG1, IgM1, IgA1, IgG2, IgM2, and IgA2. Immunoglobulins were detected with serially diluted Goat Anti-Mouse Lambda-HRP.