

### 31-1365: Goat Anti-Mouse Kappa-FITC

**Application :** IHC,IHC-P,IP,ELISA,FACS,WB,IHC-Fr

**Conjugate :** FITC

**Isotype :** Goat IgG

#### Product Info

**Amount :** 0.5 mg

**Purification :** Affinity chromatography on mouse kappa light chains covalently linked to agarose

**Content :** 1.0 mg/ml, 1.0 ml, Supplied in PBS/Sodium azide

**Storage condition :** Store at 2-8°C

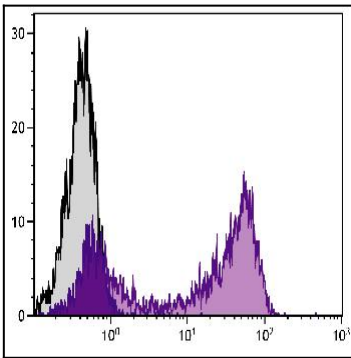


Figure 1: BALB/c mouse splenocytes were stained with Goat Anti-Mouse Kappa-FITC .

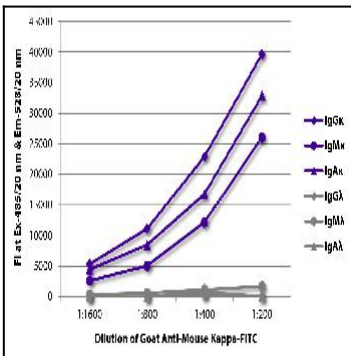


Figure 2: ELISA plate was coated with purified mouse IgG $\lambda$ , IgM $\lambda$ , IgA $\lambda$ , IgG $\kappa$ , IgM $\kappa$ , and IgA $\kappa$ . Immunoglobulins were detected with serially diluted Goat Anti-Mouse Kappa-FITC .

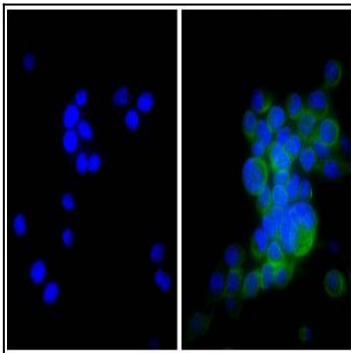


Figure 3: Human pancreatic carcinoma cell line MIA PaCa-2 was stained with Mouse Anti-Cytokeratin 18 followed by Goat Anti-Mouse Kappa-FITC and DAPI.