

## 31-1252: Goat Anti-Mouse Ig, Human ads-FITC

**Application :** IHC,ELISA,FACS,WB,IHC-Fr

**Conjugate :** FITC

**Isotype :** Goat IgG

### Product Info

**Amount :** 1.0 mg

**Purification :** Affinity chromatography on mouse IgG, IgM, and IgA covalently linked to agarose

**Content :** 1.0 mg/ml, 1.0 ml, Supplied in PBS/Sodium azide

**Storage condition :** Store at 2-8°C

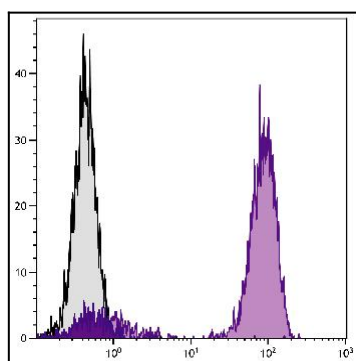


Figure 1: Human peripheral blood lymphocytes were stained with Mouse Anti-Human CD3 followed by Goat Anti-Mouse Ig, Human ads-FITC .

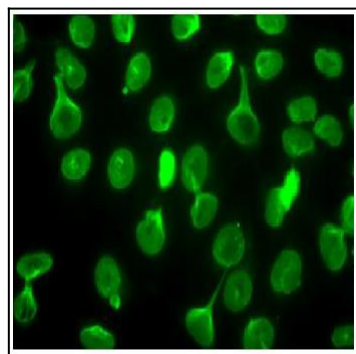


Figure 2: Human pancreatic carcinoma cells were stained with Mouse Anti-Human TIMP-4 followed by Goat Anti-Mouse Ig, Human ads-FITC .

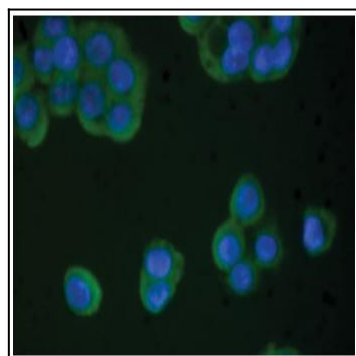


Figure 3: Human epithelial carcinoma cell line HEp-2 was stained with Mouse Anti-Human CD44 followed by Goat Anti-Mouse Ig, Human ads-FITC and DAPI.