

## 36-1419: Monoclonal Antibody to MUC18 / CD146 / MCAM (Melanoma Cell Adhesion Molecule)(Clone : MUC18/1130)

<b>Clonality :</b>	Monoclonal
<b>Clone Name :</b>	MUC18/1130
<b>Application :</b>	FACS,IF,IHC
<b>Reactivity :</b>	Human
<b>Gene :</b>	MCAM
<b>Gene ID :</b>	4162
<b>Uniprot ID :</b>	P43121
<b>Format :</b>	Purified
<b>Alternative Name :</b>	MCAM,MUC18
<b>Isotype :</b>	Mouse IgG1, kappa
<b>Immunogen Information :</b>	Recombinant human MUC18 protein

### Description

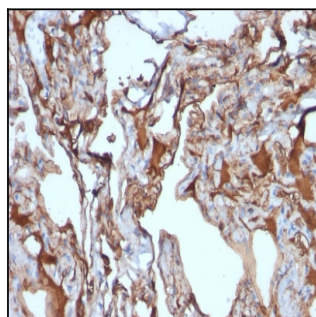
The human Mel-CAM gene maps to chromosome 11q23 and encodes a trans-membrane glycoprotein, also designated MCAM, MUC 18 or CD146, that belongs to the immunoglobulin superfamily and functions as a Ca<sup>2+</sup>-independent cell adhesion molecule. Mel-CAM expression is restricted to advanced primary and metastatic melanomas and to cell lines of the neuroectodermal lineage, but not normal melanocytes. Mel-CAM is found on 80% of advanced primary human melanomas and correlates well with development of metastatic disease.

### Product Info

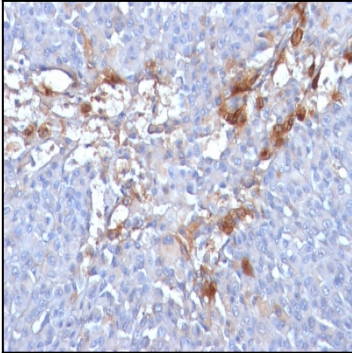
<b>Amount :</b>	100 µg
<b>Purification :</b>	Affinity Chromatography
<b>Content :</b>	100 µg in 500 µl PBS containing 0.05% BSA and 0.05% sodium azide. Sodium azide is highly toxic.
<b>Storage condition :</b>	Store the antibody at 4°C; stable for 6 months. For long-term storage; store at -20°C. Avoid repeated freeze and thaw cycles.

### Application Note

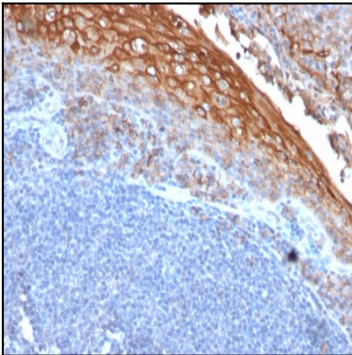
Flow Cytometry (1-2ug/million cells); Immunofluorescence (1-2ug/ml); Immunohistochemistry (Formalin-fixed) (1-2ug/ml for 30 minutes at RT)(Staining of formalin-fixed tissues requires heating tissue sections in 1mM EDTA, pH 8.0, for 45 min at 95&degC followed by cooling at RT for 20 minutes)



Formalin-fixed, paraffin-embedded human Melanoma stained with MUC18 Monoclonal Antibody (MUC18/1130)



Formalin-fixed, paraffin-embedded human Melanoma stained with MUC18 Monoclonal Antibody (MUC18/1130)



Formalin-fixed, paraffin-embedded human Tonsil stained with MUC18 Monoclonal Antibody (MUC18/1130)