

36-1417: Monoclonal Antibody to MUC18 / CD146 / MCAM (Melanoma Cell Adhesion Molecule)(Clone : SPM620)

Clonality :	Monoclonal
Clone Name :	SPM620
Application :	FACS,IF,IHC
Reactivity :	Human
Gene :	MCAM
Gene ID :	4162
Uniprot ID :	P43121
Format :	Purified
Alternative Name :	MCAM,MUC18
Isotype :	Mouse IgG1, kappa
Immunogen Information :	Recombinant human MCAM protein

Description

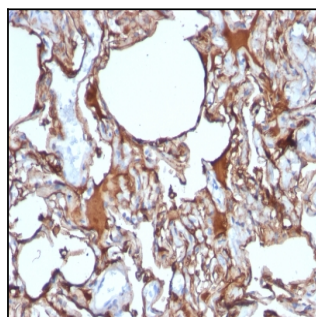
The human Mel-CAM gene maps to chromosome 11q23 and encodes a trans-membrane glycoprotein, also designated MCAM, MUC 18 or CD146, that belongs to the immunoglobulin superfamily and functions as a Ca²⁺-independent cell adhesion molecule. Mel-CAM expression is restricted to advanced primary and metastatic melanomas and to cell lines of the neuroectodermal lineage, but not normal melanocytes. Mel-CAM is found on 80% of advanced primary human melanomas and correlates well with development of metastatic disease.

Product Info

Amount :	100 µg
Purification :	Affinity Chromatography
Content :	100 µg in 500 µl PBS containing 0.05% BSA and 0.05% sodium azide. Sodium azide is highly toxic.
Storage condition :	Store the antibody at 4°C; stable for 6 months. For long-term storage; store at -20°C. Avoid repeated freeze and thaw cycles.

Application Note

Flow Cytometry (1-2ug/million cells); Immunofluorescence (1-2ug/ml); Immunohistochemistry (Formalin-fixed) (1-2ug/ml for 30 minutes at RT)(Staining of formalin-fixed tissues requires heating tissue sections in 1mM EDTA, pH 8.0, for 45 min at 95°C followed by cooling at RT for 20 minutes)



Formalin-fixed, paraffin-embedded human Melanoma stained with MCAM Monoclonal Antibody (SPM620)