

## 36-1411: Monoclonal Antibody to Ep-CAM / CD326 (Epithelial Marker)(PAN-EpCAM (Cocktail))

<b>Clonality :</b>	Monoclonal
<b>Clone Name :</b>	PAN-EpCAM (Cocktail)
<b>Application :</b>	FACS,IF,WB,IHC
<b>Reactivity :</b>	Human
<b>Gene :</b>	EPCAM
<b>Gene ID :</b>	4072
<b>Uniprot ID :</b>	P16422
<b>Format :</b>	Purified
<b>Alternative Name :</b>	EPCAM,GA733-2,M1S2,M4S1,MIC18,TACSTD1,TROP1
<b>Isotype :</b>	Mouse IgG1 s, kappa
<b>Immunogen Information :</b>	Recombinant human Ep-CAM protein (full-length and fragments)

### Description

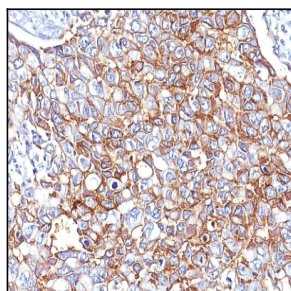
It is a cocktail of four highly specific monoclonal antibodies (EGP40/826, EGP40/837, EGP40/1110, EGP40/1120) that recognize extracellular as well as intracellular domains of the epithelial cellular adhesion molecule (Ep-CAM). It is a 40-43kDa transmembrane epithelial glycoprotein, identified as epithelial specific antigen (ESA), or Ep-CAM. Ep-CAM is expressed on baso-lateral cell surface in most simple epithelia and a vast majority of carcinomas. This epithelial antigen plays an important role as a tumor-cell marker in lymph nodes from patients with esophageal carcinoma otherwise classified as node-negative. Epithelial antigen has also been suggested as a discriminator between basal cell and baso-squamous carcinomas, and squamous cell carcinoma of the skin.

### Product Info

<b>Amount :</b>	100 µg
<b>Purification :</b>	Affinity Chromatography
<b>Content :</b>	100 µg in 500 µl PBS containing 0.05% BSA and 0.05% sodium azide. Sodium azide is highly toxic.
<b>Storage condition :</b>	Store the antibody at 4°C; stable for 6 months. For long-term storage; store at -20°C. Avoid repeated freeze and thaw cycles.

### Application Note

Flow Cytometry (1-2ug/million cells); Immunofluorescence (1-2ug/ml); Western Blot (1-2ug/ml); ,Immunohistochemistry (Formalin-fixed) (1-2ug/ml for 30 minutes at RT),(Staining of formalin-fixed tissues requires heating tissue sections in 10mM Tris with 1mM EDTA, pH 9.0, for 45 min at 95 &degC followed by cooling at RT for 20 minutes),



Formalin-fixed, paraffin-embedded human Breast Carcinoma stained with Ep-CAM Monoclonal Antibody (PAN-EpCAM).