

36-1410: Monoclonal Antibody to Ep-CAM / CD326 (Epithelial Marker)(Clone : EGP40/837)

Clonality :	Monoclonal
Clone Name :	EGP40/837
Application :	FACS,IF,WB,IHC
Reactivity :	Human
Conjugate :	PE
Gene :	EPCAM
Gene ID :	4072
Uniprot ID :	P16422
Format :	Purified
Alternative Name :	EPCAM,GA733-2,M1S2,M4S1,MIC18,TACSTD1,TROP1
Isotype :	Mouse IgG1, kappa
Immunogen Information :	Recombinant full-length human TACSTD1 protein

Description

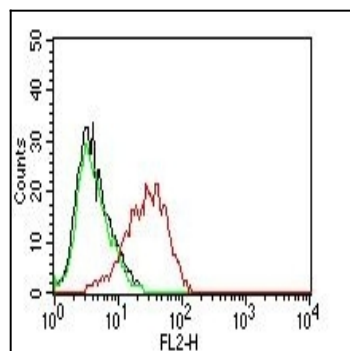
EGP40 is a 40-43kDa transmembrane epithelial glycoprotein, also identified as epithelial specific antigen (ESA), or epithelial cellular adhesion molecule (Ep-CAM). It is expressed on baso-lateral cell surface in most simple epithelia and a vast majority of carcinomas. This antibody has been used to distinguish adenocarcinoma from pleural mesothelioma and hepatocellular carcinoma. This antibody is also useful in distinguishing serous carcinomas of the ovary from mesothelioma.

Product Info

Amount :	0.5 ml
Purification :	Affinity Chromatography
Content :	PE conjugated Ep-CAM / CD326 Prepared in 10mM PBS with 0.05% BSA and 0.05% azide.
Storage condition :	Store the antibody at 4°C; stable for 6 months.

Application Note

Flow Cytometry (1-2ug/million cells); Immunofluorescence (1-2ug/ml); Western Blot (1-2ug/ml); Immunohistochemistry (Formalin-fixed) (1-2ug/ml for 30 min at RT)(Staining of formalin-fixed tissues requires heating tissue sections in 10mM Tris with 1mM EDTA, pH 9.0, for 45 min at 95°C followed by cooling at RT for 20 minutes);



Flow Cytometry of human Ep-CAM on MCF-7 Cells. Black: Cells alone; Green: Isotype Control; Red: PE-labeled Ep-CAM Monoclonal Antibody (EGP40/837).