

## 36-1409: Monoclonal Antibody to Ep-CAM / CD326 (Epithelial Marker)(Clone : EGP40/837)

<b>Clonality :</b>	Monoclonal
<b>Clone Name :</b>	EGP40/826
<b>Application :</b>	FACS,IF,WB,IHC
<b>Reactivity :</b>	Human
<b>Gene :</b>	EPCAM
<b>Gene ID :</b>	4072
<b>Uniprot ID :</b>	P16422
<b>Format :</b>	Purified
<b>Alternative Name :</b>	EPCAM,GA733-2,M1S2,M4S1,MIC18,TACSTD1,TROP1
<b>Isotype :</b>	Mouse IgG1, kappa
<b>Immunogen Information :</b>	Recombinant human TACSTD1 protein

### Description

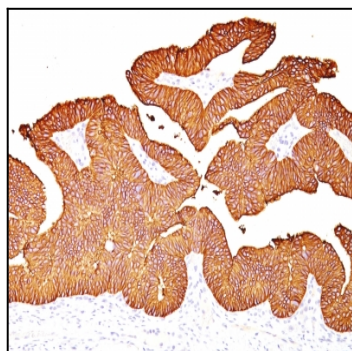
EGP40 is a 40-43kDa transmembrane epithelial glycoprotein, also identified as epithelial specific antigen (ESA), or epithelial cellular adhesion molecule (Ep-CAM). It is expressed on baso-lateral cell surface in most simple epithelia and a vast majority of carcinomas with the exception of adult squamous epithelium, hepatocytes and gastric epithelial cells. This antibody has been used to distinguish adenocarcinoma from pleural mesothelioma and hepatocellular carcinoma. This antibody is also useful in distinguishing serous carcinomas of the ovary from mesothelioma.

### Product Info

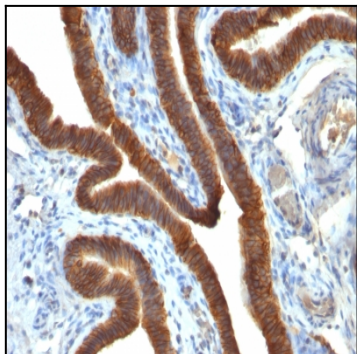
<b>Amount :</b>	100 µg
<b>Purification :</b>	Affinity Chromatography
<b>Content :</b>	100 µg in 500 µl PBS containing 0.05% BSA and 0.05% sodium azide. Sodium azide is highly toxic.
<b>Storage condition :</b>	Store the antibody at 4°C; stable for 6 months. For long-term storage; store at -20°C. Avoid repeated freeze and thaw cycles.

### Application Note

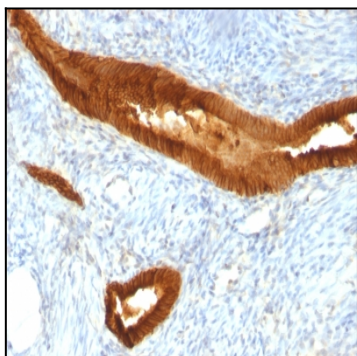
Flow Cytometry (1-2ug/million cells); Immunofluorescence (1-2ug/ml); ,Western Blot (1-2ug/ml); ,Immunohistochemistry (Formalin-fixed) (1-2ug/ml for 30 min at RT),(Staining of formalin-fixed tissues requires heating tissue sections in 10mM Tris with 1mM EDTA, pH 9.0, for 45 min at 95&degC followed by cooling at RT for 20 minutes);



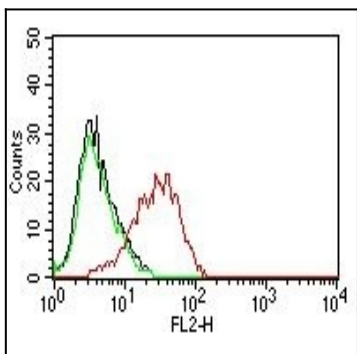
Formalin-fixed, paraffin-embedded human Colon Carcinoma stained with Ep-CAM Monoclonal Antibody (EGP40/837).



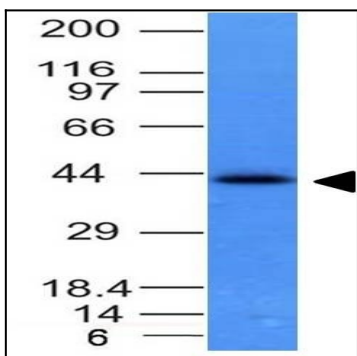
Formalin-fixed, paraffin-embedded human Ovarian Carcinoma stained with Ep-CAM Monoclonal Antibody (EGP40/837).



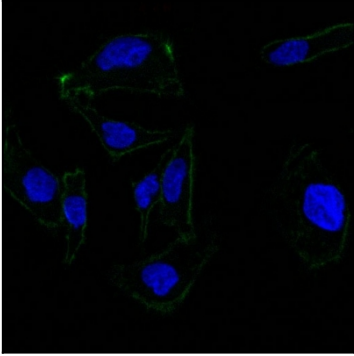
Formalin-fixed, paraffin-embedded human Endometrial Carcinoma stained with Ep-CAM Monoclonal Antibody (EGP40/837).



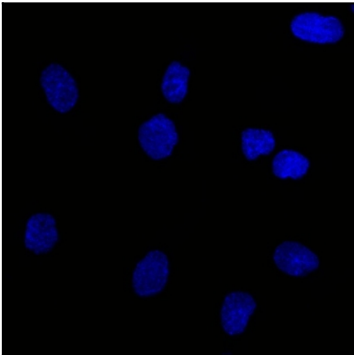
Flow Cytometry of human MCF-7 Cells. Black: Cells alone; Green: Isotype Control; Red: PE-labeled Ep-CAM Monoclonal Antibody (EGP40/837).



Western Blot of HCT116 Cell Lysate using Ep-CAM Monoclonal Antibody (EGP40/837).



Confocal Immunofluorescent analysis of SK-OV-3 cells using AF488-labeled EpCAM Monoclonal Antibody (EGP40/837) (Green). DAPI was used to stain the cell nuclei (blue).



Confocal Immunofluorescent analysis of SK-OV-3 cells using AF488-labeled Isotype Control Monoclonal Antibody (IgG1) (Green). DAPI was used to stain the cell nuclei (blue). (Negative Control)