

36-1405: Monoclonal Antibody to Ep-CAM / CD326 (Epithelial Marker)(Clone : MOC-31)

Clonality :	Monoclonal
Clone Name :	MOC-31
Application :	IHC
Reactivity :	Human
Gene :	EPCAM
Gene ID :	4072
Uniprot ID :	P16422
Format :	Purified
Alternative Name :	EPCAM,GA733-2,M1S2,M4S1,MIC18,TACSTD1,TROP1
Isotype :	Mouse IgG1, kappa
Immunogen Information :	Neuraminidase treated GLS-1 human small cell lung carcinoma cells

Description

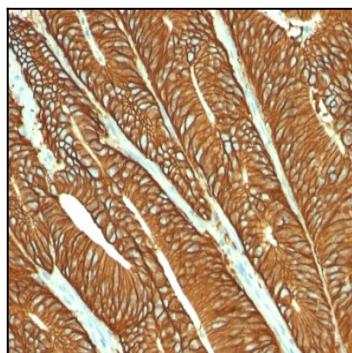
Binding epitope of this antibody is located in the first EGF-like repeat domain (EGF1) between amino acids 27-59 of Ep-CAM. EGP40 is a 40-43kDa transmembrane epithelial glycoprotein, also identified as epithelial specific antigen (ESA), or epithelial cellular adhesion molecule (Ep-CAM). It is expressed on baso-lateral cell surface in most simple epithelia and a vast majority of carcinomas with the exception of adult squamous epithelium, hepatocytes and gastric epithelial cells. This antibody has been used to distinguish adenocarcinoma from pleural mesothelioma and hepatocellular carcinoma. This antibody is also useful in distinguishing serous carcinomas of the ovary from mesothelioma.

Product Info

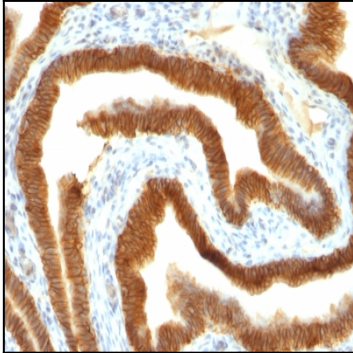
Amount :	100 µg
Purification :	Affinity Chromatography
Content :	100 µg in 500 µl PBS containing 0.05% BSA and 0.05% sodium azide. Sodium azide is highly toxic.
Storage condition :	Store the antibody at 4°C; stable for 6 months. For long-term storage; store at -20°C. Avoid repeated freeze and thaw cycles.

Application Note

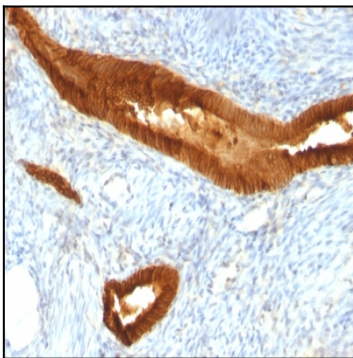
Immunohistochemistry (Formalin-fixed) (1-2ug/ml for 30 minutes at RT),(Staining of formalin-fixed tissues requires heating tissue sections in 10mM Tris with 1mM EDTA, pH 9.0, for 45 min at 95 °C followed by cooling at RT for 20 minutes),



Formalin-fixed, paraffin-embedded human Colon Carcinoma stained with Ep-CAM Monoclonal Antibody (MOC-31).



Formalin-fixed, paraffin-embedded human Ovarian Carcinoma stained with Ep-CAM Monoclonal Antibody (MOC-31).



Formalin-fixed, paraffin-embedded human Endometrial Carcinoma stained with Ep-CAM Monoclonal Antibody (MOC-31).