

11-12027: Polyclonal Antibody to OCT1

Clonality :	Polyclonal
Application :	WB
Reactivity :	Human
Gene :	POU2F1
Gene ID :	5451
Uniprot ID :	P14859
Format :	Purified
Alternative Name :	POU2F1,OCT1,OTF1
Isotype :	Rabbit IgG
Immunogen Information :	A partial length recombinant OCT1/OTF1 protein (amino acids 420-600) was used as the immunogen for this antibody.

Product Info

Amount :	25 µg / 100 µg
Purification :	Protein A Chromatography
Content :	25 µg in 50 µl/100 µg in 200 µl PBS containing 0.05% BSA and 0.05% sodium azide. Sodium azide is highly toxic.
Storage condition :	Store the antibody at 4°C, stable for 6 months. For long-term storage, store at -20°C. Avoid repeated freeze and thaw cycles.

Application Note

Western blot analysis: 2-4 µg/ml

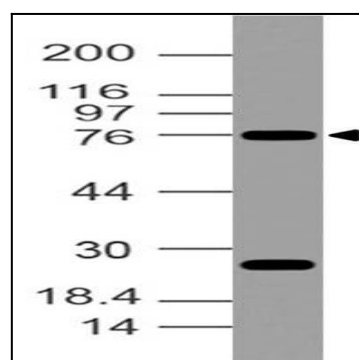


Fig-1: Western blot analysis of OCT1/OTF1. Anti-OCT1/OTF1 antibody (11-12027) was used at 2 µg/ml on A549 lysate.