

## 11-7569: Polyclonal Antibody to NSE gamma

<b>Clonality :</b>	Polyclonal
<b>Application :</b>	WB
<b>Reactivity :</b>	Human
<b>Gene :</b>	ENO2
<b>Gene ID :</b>	2026
<b>Uniprot ID :</b>	P09104
<b>Format :</b>	Purified
<b>Alternative Name :</b>	ENO2, 2-phospho-D-glycerate hydro-lyase, Enolase 2, Neural enolase
<b>Isotype :</b>	Rabbit IgG
<b>Immunogen Information :</b>	A partial length recombinant protein from C terminal portion of h NSE Gamma was used as the immunogen for this antibody.

### Product Info

<b>Amount :</b>	25 µg / 100 µg
<b>Purification :</b>	Protein A Chromatography
<b>Content :</b>	25 µg in 50 µl/100 µg in 200 µl PBS containing 0.05% BSA and 0.05% sodium azide. Sodium azide is highly toxic.
<b>Storage condition :</b>	Store the antibody at 4°C, stable for 6 months. For long-term storage, store at -20°C. Avoid repeated freeze and thaw cycles.

### Application Note

Western blot analysis: 0.5-1 µg/ml

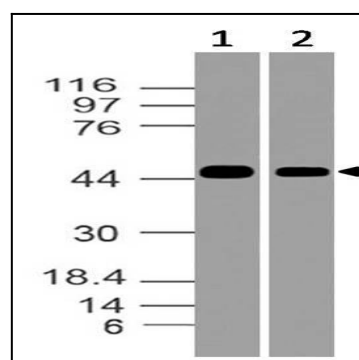


Fig-1: Western blot analysis of NSE gamma. Anti-NSE gamma antibody (11-7569) was used at 0.5 µg/ml on (1) h Brain and (2) HepG2 lysates.