

## 36-1399: Monoclonal Antibody to Ep-CAM / CD326 (Epithelial Marker)(Clone : EGP40/1110)

<b>Clonality :</b>	Monoclonal
<b>Clone Name :</b>	EGP40/1110
<b>Application :</b>	IHC
<b>Reactivity :</b>	Human, Mouse, Rat
<b>Gene :</b>	EPCAM
<b>Gene ID :</b>	4072
<b>Uniprot ID :</b>	P16422
<b>Format :</b>	Purified
<b>Alternative Name :</b>	EPCAM,GA733-2,M1S2,M4S1,MIC18,TACSTD1,TROP1
<b>Isotype :</b>	Mouse IgG2b, kappa
<b>Immunogen Information :</b>	A recombinant human EpCAM fragment from the cytoplasmic domain

### Description

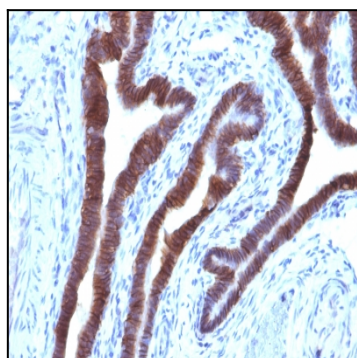
EGP40 is a 40-43kDa transmembrane epithelial glycoprotein, also identified as epithelial specific antigen (ESA), or epithelial cellular adhesion molecule (Ep-CAM). It is expressed on baso-lateral cell surface in most simple epithelia and a vast majority of carcinomas. This antibody has been used to distinguish adenocarcinoma from pleural mesothelioma and hepatocellular carcinoma. This antibody is also useful in distinguishing serous carcinomas of the ovary from mesothelioma.

### Product Info

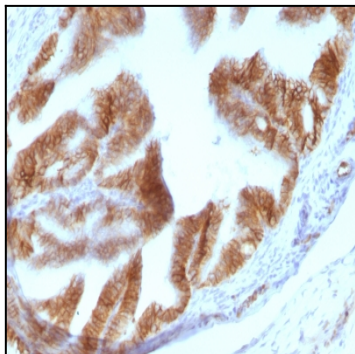
<b>Amount :</b>	100 µg
<b>Purification :</b>	Affinity Chromatography
<b>Content :</b>	100 µg in 500 µl PBS containing 0.05% BSA and 0.05% sodium azide. Sodium azide is highly toxic.
<b>Storage condition :</b>	Store the antibody at 4°C; stable for 6 months. For long-term storage; store at -20°C. Avoid repeated freeze and thaw cycles.

### Application Note

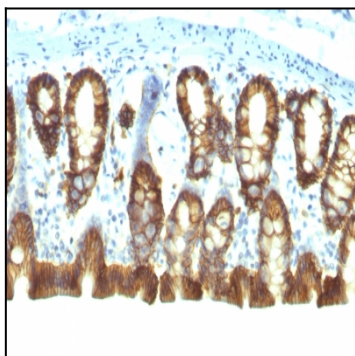
Immunohistochemistry (Formalin-fixed) (1-2ug/ml for 30 minutes at RT),(Staining of formalin-fixed tissues requires heating tissue sections in 10mM Tris with 1mM EDTA, pH 9.0, for 45 min at 95 °C followed by cooling at RT for 20 minutes),



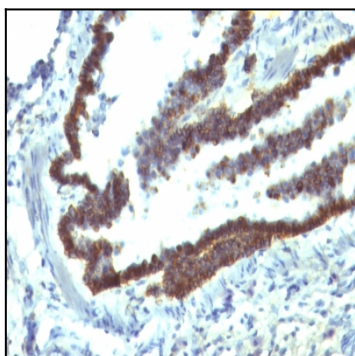
Formalin-fixed, paraffin-embedded human Ovarian Carcinoma stained with Ep-CAM Monoclonal Antibody (EGP40/1110).



Formalin-fixed, paraffin-embedded Rat Oviduct stained with Ep-CAM Monoclonal Antibody (EGP40/1110).



Formalin-fixed, paraffin-embedded Rat Colon stained with Ep-CAM Monoclonal Antibody (EGP40/1110).



Formalin-fixed, paraffin-embedded Rat Lung stained with Ep-CAM Monoclonal Antibody (EGP40/1110).