

11-4035: Polyclonal Antibody to Siglec9

Clonality :	Polyclonal
Application :	WB
Reactivity :	Human
Gene :	SIGLEC9
Gene ID :	27180
Uniprot ID :	Q9Y336
Format :	Purified
Alternative Name :	SIGLEC9,UNQ668/PRO1302
Isotype :	Rabbit IgG
Immunogen Information :	A partial length recombinant Siglec9 protein (amino acids 1-215) was used as the immunogen for this antibody.

Product Info

Amount :	25 µg / 100 µg
Purification :	Protein A Chromatography
Content :	25 µg in 50 µl/100 µg in 200 µl PBS containing 0.05% BSA and 0.05% sodium azide. Sodium azide is highly toxic.
Storage condition :	Store the antibody at 4°C, stable for 6 months. For long-term storage, store at -20°C. Avoid repeated freeze and thaw cycles.

Application Note

Western blot analysis: 1-2 µg/ml

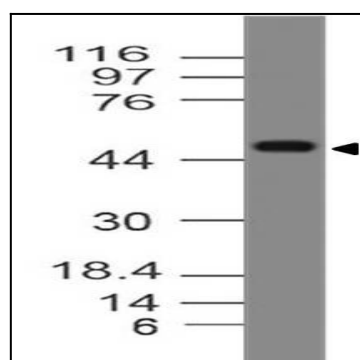


Fig-1: Western blot analysis of Siglec9. Anti-Siglec9 antibody (11-4035) was used at 2 µg/ml on Jurkat lysate.